

600AJ Articulating Boom Lift



SPECIFICATIONS

Performance:

Platform Height (max.)	18.29m
Working Height	20.29m
Platform Rotation Angle	180°
Jib Raise Angle	70°
Jib Lower Angle	65°
Jib Articulation Range	135°
Maximum Horizontal Outreach	12.12m
Platform Capacity	230kg
Slewing Angle	360°
Continuous Slew	Yes

Dimensions:

Stowed Length	8.83m
Stowed Height	2.57m
Overall Width	2.44m
Wheelbase	2.44m
Ground Clearance	0.30m
Platform Width	2.44m
Platform Length	0.91m
Overall Jib Length	1.83m
Tailswing	0m
Axle Oscillation	Std

Power:

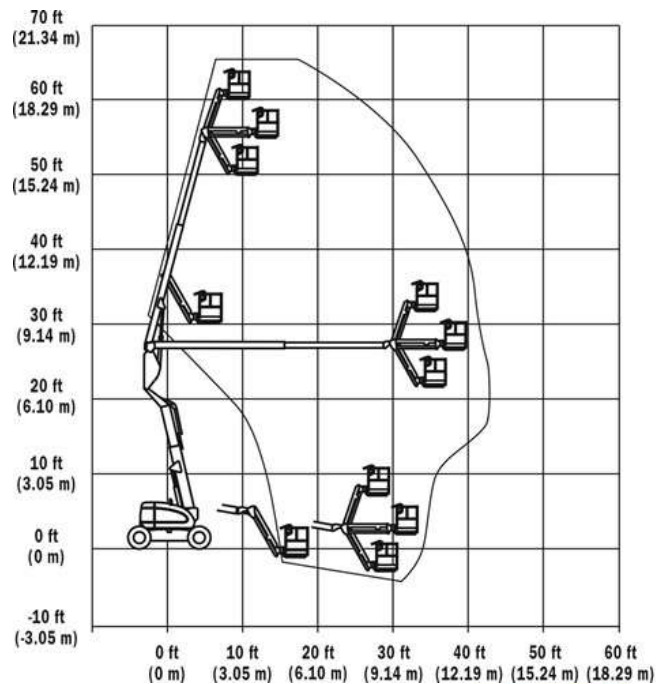
Power Source	Diesel
Engine Make	Deutz
Engine Model	D2011 L04
Engine Power	48kW
Genset	5.5kVA Miller
Auxiliary Power	12V Pump

Travel:

Tyre Size	14 x 17.5
Tyre Type	Urethane Filled
Inside Turn Radius	1.68m
Outside Turn Radius	3.56m
Gradeability with 4WD	45%
Drive Speed - 4WD	7.68km/h
Maximum Ground Bearing Pressure	5.25kg/cm ²

Weights and Capabilities:

Fuel Tank Capacity	113.56 Ltr
Hydraulic Tank Capacity	115.83 Ltr
Operating Weight	11,900kg



KEY SELLING POINTS

- Smooth control, proportional hydraulic 4 wheel drive, with two speed ranges
- Proportional lift and swing controls at the platform for fast functionality
- Oscillating front steer axle with the boom within 10 degrees of centre, assists 4 wheel drive traction
- 4 wheel steer
- Jib boom and basket rotate
- Knuckle boom arrangement allows fast operating speeds
- Cylinder boots protect cylinder rods from overspray and contaminants
- Lug pattern urethane filled tyres
- Multi axis 4 degree level sensor
- Plug in JLG analyser at platform and base to indicate system functions for servicing and adjustment
- Deutz Engine D2011 L04. High speed, 4 cylinder, liquid (oil cooled), 48.5kW engine pre-glow and post-glow feature reduces emissions