

# 450AJSII Articulating Boom Lift



## SPECIFICATIONS

### Performance:

Platform Height (max.)	13.72m
Working Height	15.72m
Platform Rotation Angle	170°
Jib Raise Angle	75°
Jib Lower Angle	70°
Jib Articulation Range	145°
Maximum Horizontal Outreach	7.47m
Platform Capacity	230kg
Slewing Angle	360°
Continuous Slew	No

### Dimensions:

Stowed Length	6.53m
Stowed Height	2.30m
Overall Width	2.34m
Wheelbase	2.26m
Ground Clearance	0.36m
Platform Width	1.83m
Platform Length	0.76m
Overall Jib Length	1.24m
Tailswing	0m
Axle Oscillation	Std

### Power:

Power Source	Diesel
Engine Make	Perkins
Engine Model	404C-22
Engine Power	37kW
Genset	5.5kVA Miller
Auxiliary Power	12V Pump

### Travel:

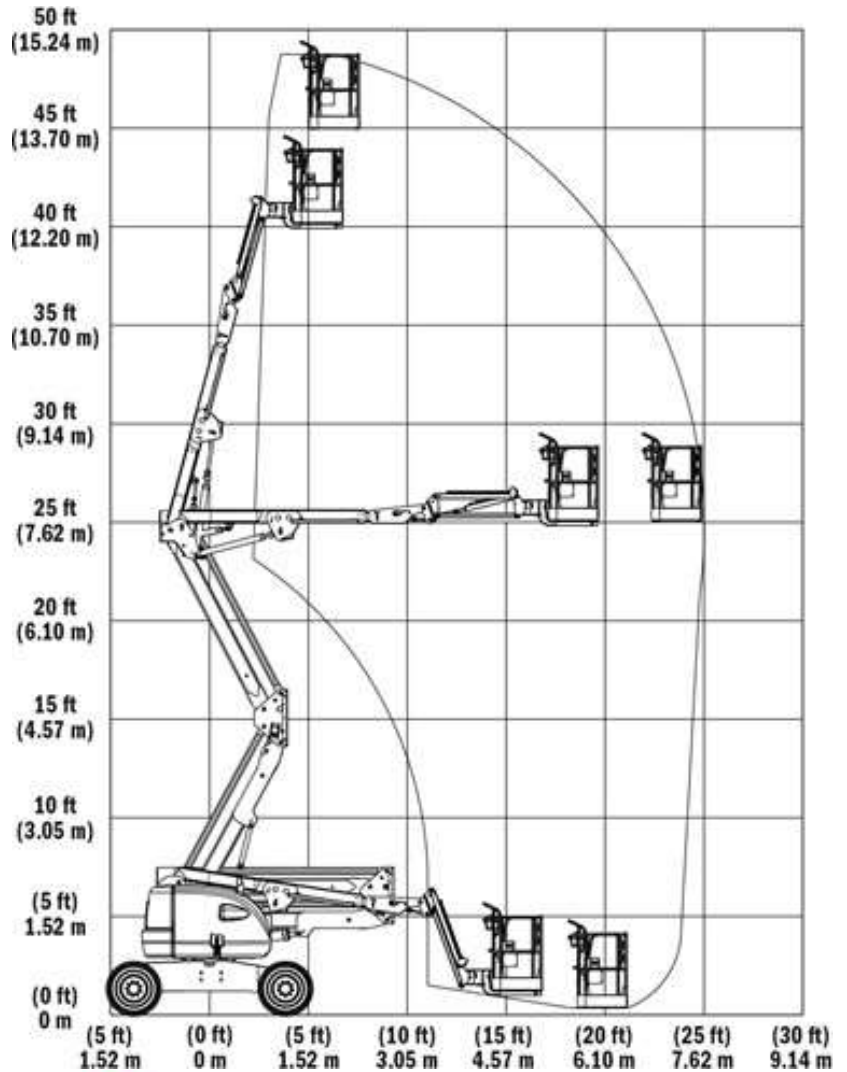
Tyre Size	12 x 16.5
Tyre Type	Urethane Filled
Inside Turn Radius	1.73m
Outside Turn Radius	4.27m
Gradeability with 4WD	45%
Drive Speed - 4WD	7.2km/h
Maximum Ground Bearing Pressure	5.48kg/cm <sup>2</sup>

### Weights and Capabilities:

Fuel Tank Capacity	62.5 Ltr
Hydraulic Tank Capacity	113.6 Ltr
Operating Weight	7,430kg

## KEY SELLING POINTS

- Smooth control, proportional hydraulic 4 wheel drive, with two speed ranges
- Proportional lift and swing controls at the platform
- Oscillating front steer axle with the boom within 10 degrees of centre, assists 4 wheel drive traction
- Tight steering turning circle
- No tail swing
- Jib boom and basket rotate
- Lug pattern urethane filled tyres



- Cylinder boots protect cylinder rods from overspray and contaminants
- Multi axis 4 degree level sensor
- Plug in JLG analyser at platform and base to indicate system functions for servicing and adjustment
- Perkins 404C-22, 4 cylinder 2.216 litre diesel engine. 50HP/37kW @ 2800rpm, reduces noise, vibration, emissions and runs at a slower speed to reduce fuel use