

# 1500AJP Articulating Boom Lift



## SPECIFICATIONS

### Performance:

Platform Height (max.)	45.72m
Working Height	43.72m
Platform Rotation Angle	180°
Jib Plus Rotation Angle	125°
Jib Raise Angle	75°
Jib Lower Angle	55°
Jib Articulation Range	130°
Maximum Horizontal Outreach	23.55m
Platform Capacity	272kg/454kg
Slewing Angle	360° Continuous
Level Sensor	5 x 3

### Dimensions:

Stowed Length	15.10m
Stowed Length (transport)	12.10m
Stowed Height	3.10m
Overall Width	2.50m
Overall Width with Extended Axle	5m
Wheelbase	4.60m
Ground Clearance	0.30m
Platform Width	2.44m
Platform Length	0.91m
Overall Jib Length	2.44m
Tailswing	2.49m

### Power:

Power Source	Diesel
Engine Make	Deutz
Engine Model	TCD 3.6L Tier IV F
Engine Power	74.4kW
Engine Fuel	Diesel
DC Voltage	12V
DC Power	1400CCA
Genset	5.5kVA Miller
Auxiliary Power	12V Pump

### Travel:

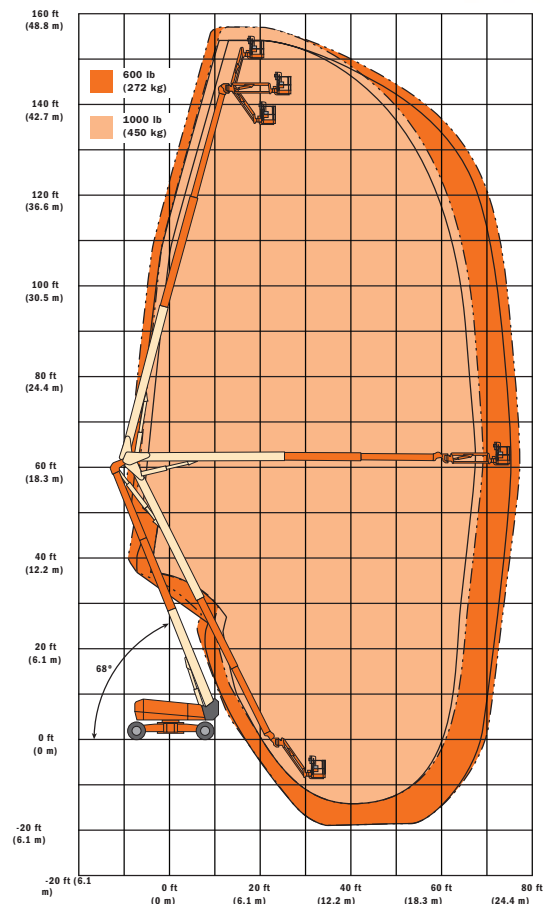
Tyre Size	445/50 D 710
Tyre Type	Urethane Filled
Inside Turn Radius	7.12m
Outside Turn Radius	9.52m
Turn Radius with Axle Extended	2.3m
Drive Speed Elevated	0.5km/h
Gradeability with 4WD	40%
Maximum Ground Bearing Pressure	7.03kg/cm2

### Weights and Capabilities:

Fuel Tank Capacity	170.0 Ltr
Hydraulic Tank Capacity	352.0 Ltr
Operating Weight	26,039kg



1500AJP



### KEY SELLING POINTS

- Articulating Jib
- Dual Rated Capacities (600/1,000 lb)
- Drive-Out Extendable Axles
- 180° Hydraulic Platform Rotator
- AC Receptacle in Platform
- Tilt Light and Alarm
- 12V-DC Auxiliary Power
- Hourmeter
- Control ADE® System
- Proportional Controls
- SkyGuard SkyLine™
- Dual USB Power Outlet
- Gull-Wing Steel Hoods
- 445/50D710 Foam-Filled Rim Protector Lug Tread Tires
- Platform Console Machine Status Light Panel 2
- Lifting/Tie Down Lugs
- Engine Distress Warning/Shutdown—Selectable via JLG Analyzer
- All Motion Alarm
- LCD Panel at Operator's Platform Control Console
- Quick Stik®
- Load Sensing System (LSS)